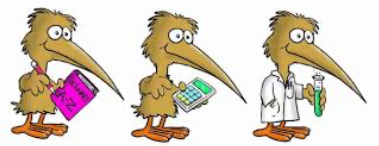




2021 Kiwi English, Mathematics and Science Competitions



Dear Parents

The University of Canterbury is offering your child the opportunity to participate in the KIWI English, Mathematics and Science competitions. These competitions take place annually and are designed by New Zealand teachers for New Zealand students based on the New Zealand Curriculum. For further information, please consult the CAM website www.canterbury.ac.nz/cam

The competitions are open to all Year 5-10 students in English, Mathematics and Science. Students can enter in one or more subjects. The competition will provide parents/caregivers with an Individual Pupil Report of a student's performance. The supervised online tests will take place in the last 3 weeks of Term 2 and the first week of Term 3.

All participating students will receive a certificate. A prize will be awarded to the top student nationally in each competition.

NOTE: The policy is not to release test papers. The tests are provided primarily as a competition and not as a teaching resource.

Entries are administered by the school. For further information, please consult the CAM website www.canterbury.ac.nz/cam

LCS Parents:

Please follow this link to enter: <https://forms.gle/VCryE4eNZ7uQrXz66>

PLEASE NOTE, this year, entries must be made via the google form and payment must be made by bank transfer. Please put **Kiwi Comp** and **student's family name & initial** as references.

Bank account: 02-0908-0263142-00

Account name: Liberton Christian School Board of Trustees

If you have any questions, please contact your child's teacher.

Many thanks

Bronwyn Bennington
bronwynb@libertonchristian.school.nz

Grant Peacock
grantp@libertonchristian.school.nz

Reporting of Results

Results are provided to schools in Term 3.

Results are reported separately for each competition. Individual student reports are provided for Parents/Caregivers. Student reports outline student's performance overall and for each section including their level of completion and accuracy. For an example of the student report please visit <https://www.canterbury.ac.nz/cam/kiwi-competitions/administration-and-printable-resources/>

Results include a Participated, Achieved, Merit, Excellence and a Distinction score with which students and teachers are familiar.

The school report file (school use only) includes an overall percentage, percentage scores for different strands of the various curricula, stanine, descriptive grade for each student, the average and 50th percentile for the national group for each competition. A summary of the national statistics for all competitions.

A certificate is provided for all participating students and a prize will be awarded to the top student in each competition.

When will the competition be run?

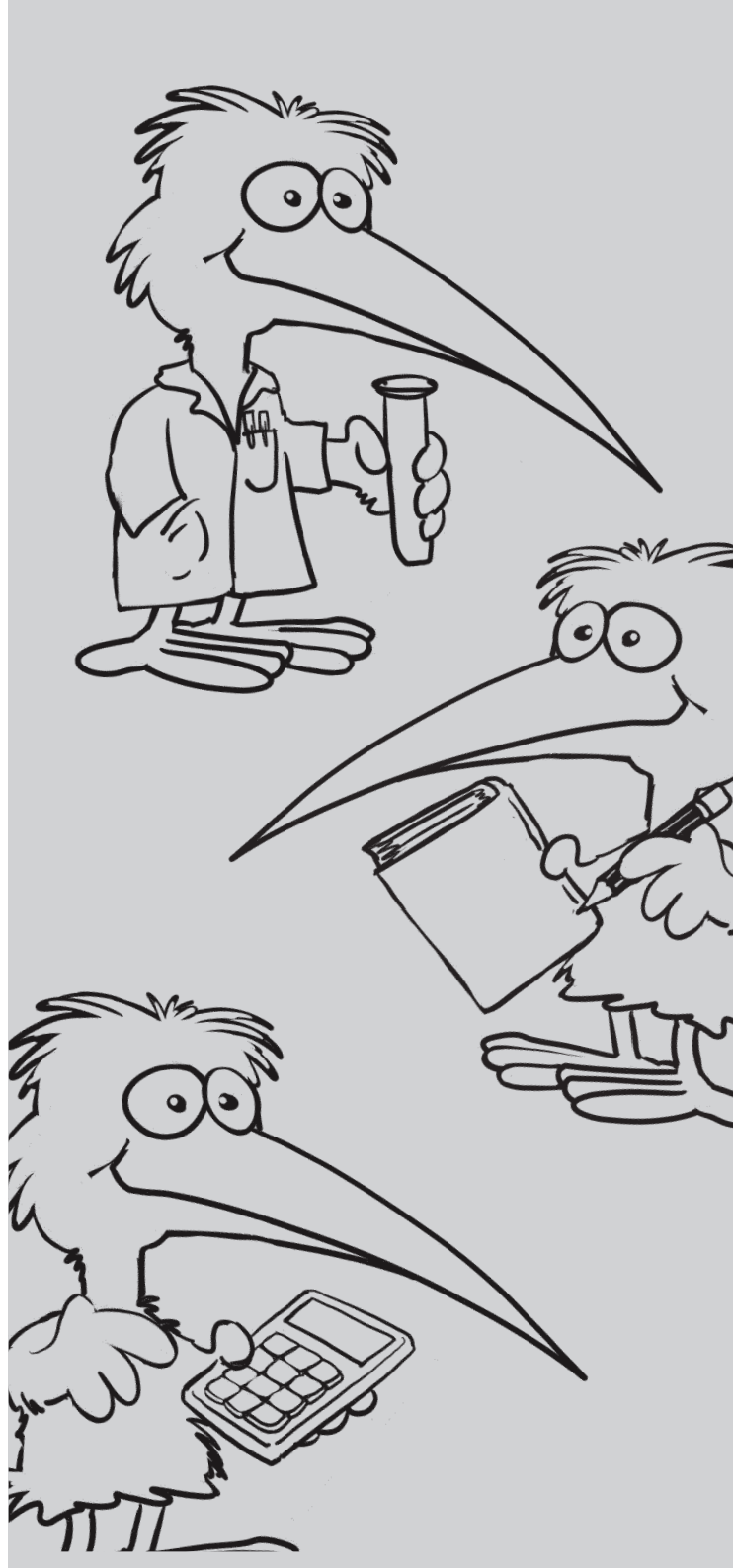
The on-line competitions will be run in the last three weeks of Term 2 and the first week of Term 3, at a time suitable to the school. Different classes or groups can participate in the competition at different times during this period to give schools flexibility in running the competition.

Register Now!

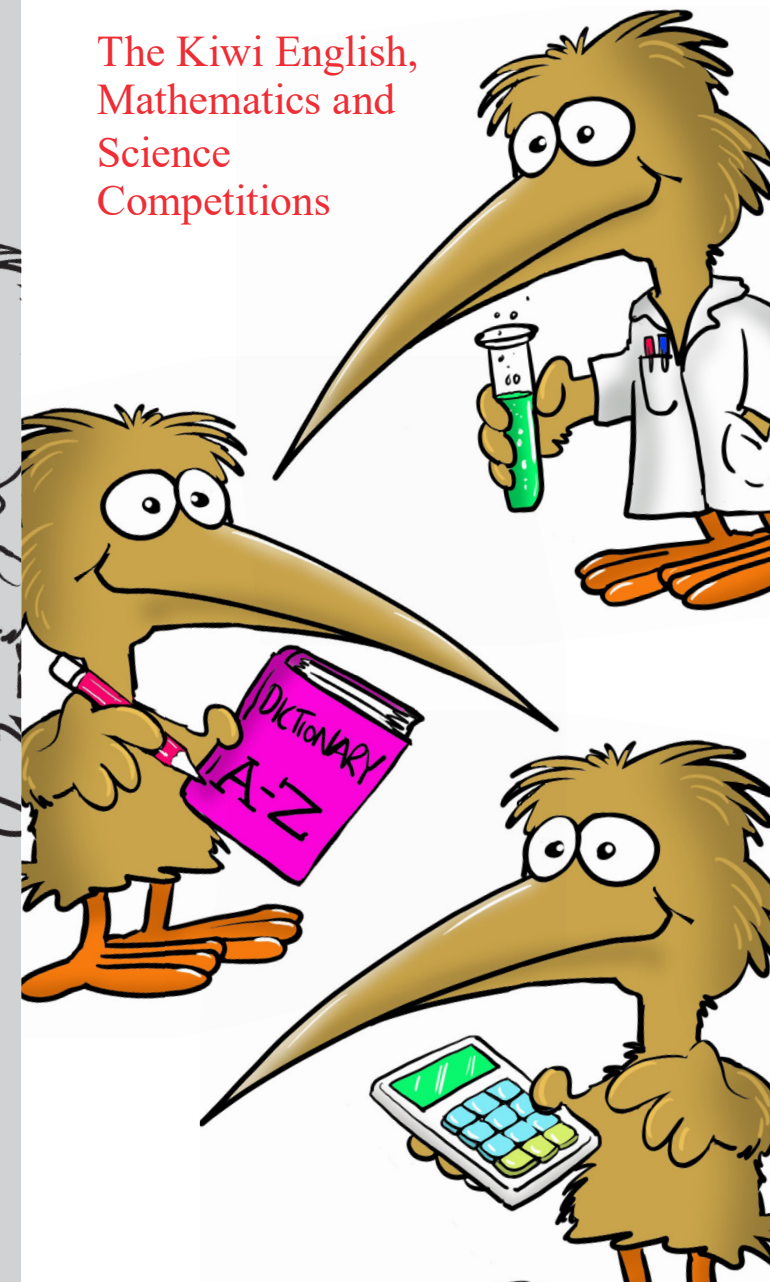
The cost per student for each competition is \$9.50 (inc GST).

A form letter for parents and caregivers is available on our website. The letter invites students to participate and includes a tear off entry slip to be returned to the school. The entry fee is to be collected by schools.

Schools can register on-line by clicking the 'Register Now!' button on the CAM website
<https://www.canterbury.ac.nz/cam/>



The Kiwi English, Mathematics and Science Competitions



Kiwi English, Mathematics and Science Competitions

About the competitions

The annual Kiwi, English, Mathematics and Science competitions are skills-based tests and closely align with the New Zealand Curriculum. The competitions are organised by The Centre for Assessment & Monitoring (CAM) at the University of Canterbury.

The competitions cater for students of all abilities in primary, intermediate and secondary schools and measure the performance of students at the Curriculum and Year levels shown below:

Level	Year Level	Curriculum Level
Primary	5-6	3
Intermediate	7-8	4
Secondary	9-10	5

The tests are designed by New Zealand teachers for New Zealand students. The tests are administered online and take 50 minutes to complete so they can be conveniently slotted into the school timetable. Each test consists of 40 short answer questions depending on the Year Level.

Whaia te iti kahurangi
Reach for the stars

The Kiwi Science Competition

Questions in the Kiwi Science Competition are skills based and cover:

Investigating

Experimental design, use of controls and the notion of a 'fair test'.

Interpreting data

Interpreting diagrams, tables and graphs.

Critical thinking skills

Reasoning, problem solving and logical deduction.

The tests use every day contexts relevant to the following strands of the Science in the New Zealand Curriculum:

- Nature of Science
- Living World
- Planet Earth and Beyond
- Physical World
- Material World



The Kiwi Mathematics Competition

The tests use every day contexts relevant to the following strands of the appropriate level of Mathematics in the New Zealand Curriculum:

- Number and Algebra
- Geometry and measurement
- Statistics

Questions do not depend on mathematical knowledge alone, but on the ability to think things through, be logical, find ways to solve problems and are designed to make students think outside the box.

The competition encourages enthusiasm, boosts confidence in Mathematics and shows the different way questions can be asked. Students also need to read the questions carefully!

The Kiwi English Competition

The tests use every day contexts relevant to the appropriate level of English in the New Zealand Curriculum:

- Reading and comprehension
- Grammar and spelling
- Audience and purpose

